

Staying Safe at the Coast



Here are some people enjoying a day at the coast.



HM Coastguard

[Click here to play Spot the Danger ▼](#)

[Click here for a colouring in picture ▼](#)





Spot the Danger. There are **five** differences between these pictures.
Click on the difference in the picture below to find out more.



HM Coastguard





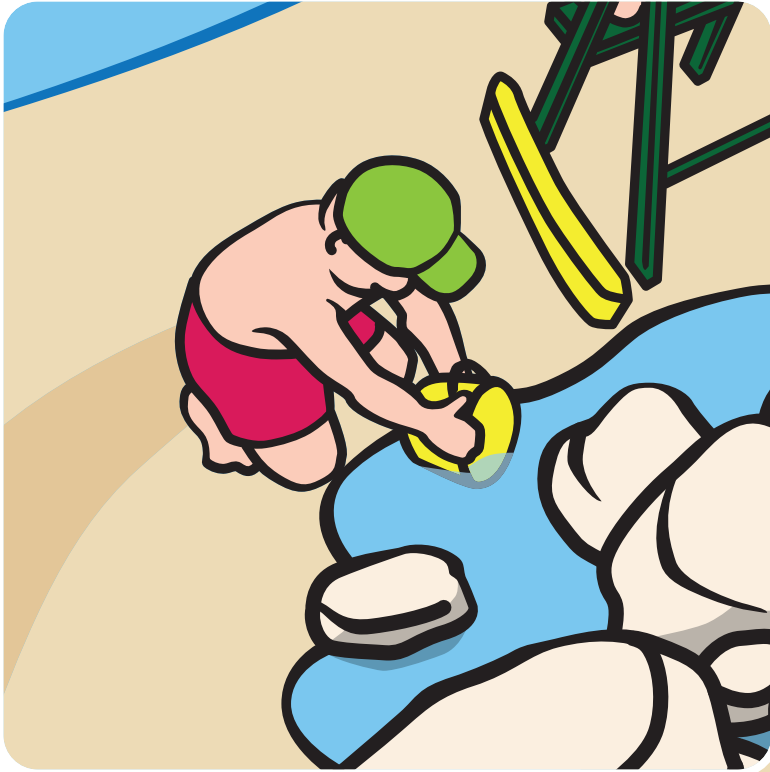
Cliff edges are dangerous - stay away in case they collapse. Keep all dogs on a lead and stick to marked paths.



HM Coastguard

Back ▲





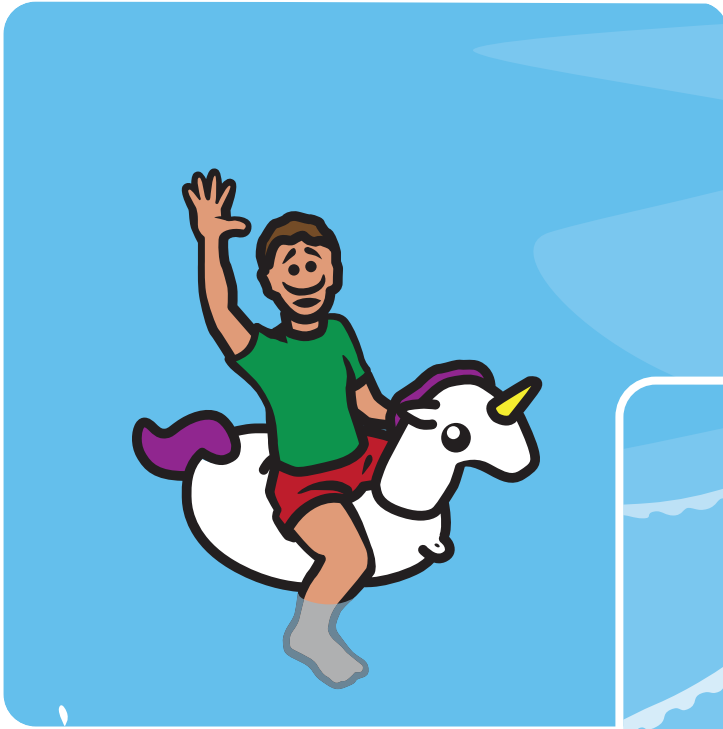
Playing on rocks is dangerous. They are often slippery. You could fall and hurt yourself.



HM Coastguard

Back ▲





An inflatable toy or airbed can be easily swept out to sea by the current or wind. Keep them for the pool not the beach!





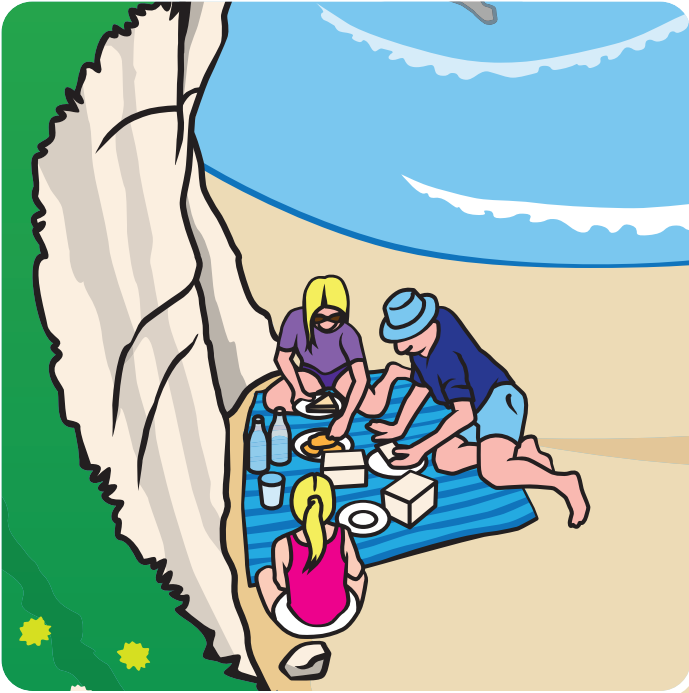
Visit a lifeguarded beach if you can. Stay between the red and yellow flags. A plain red flag means it's too dangerous to go into the water.



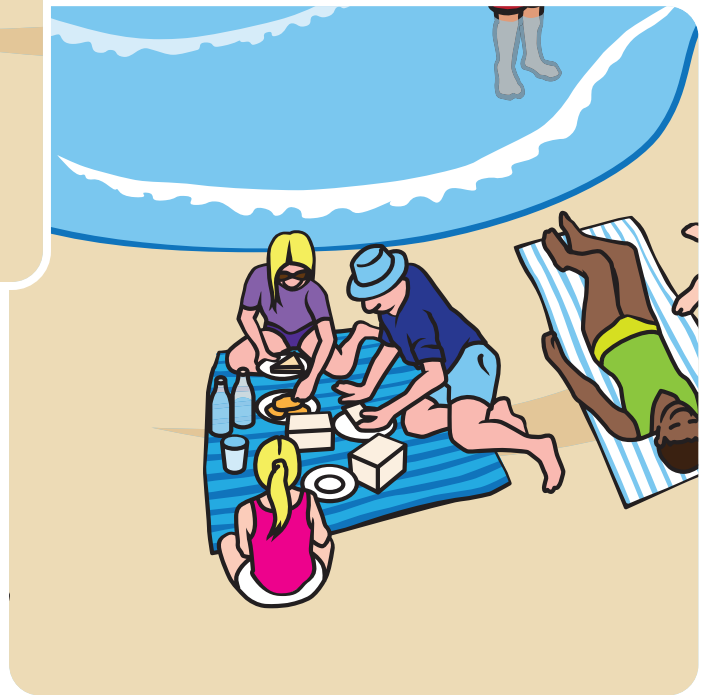
HM Coastguard

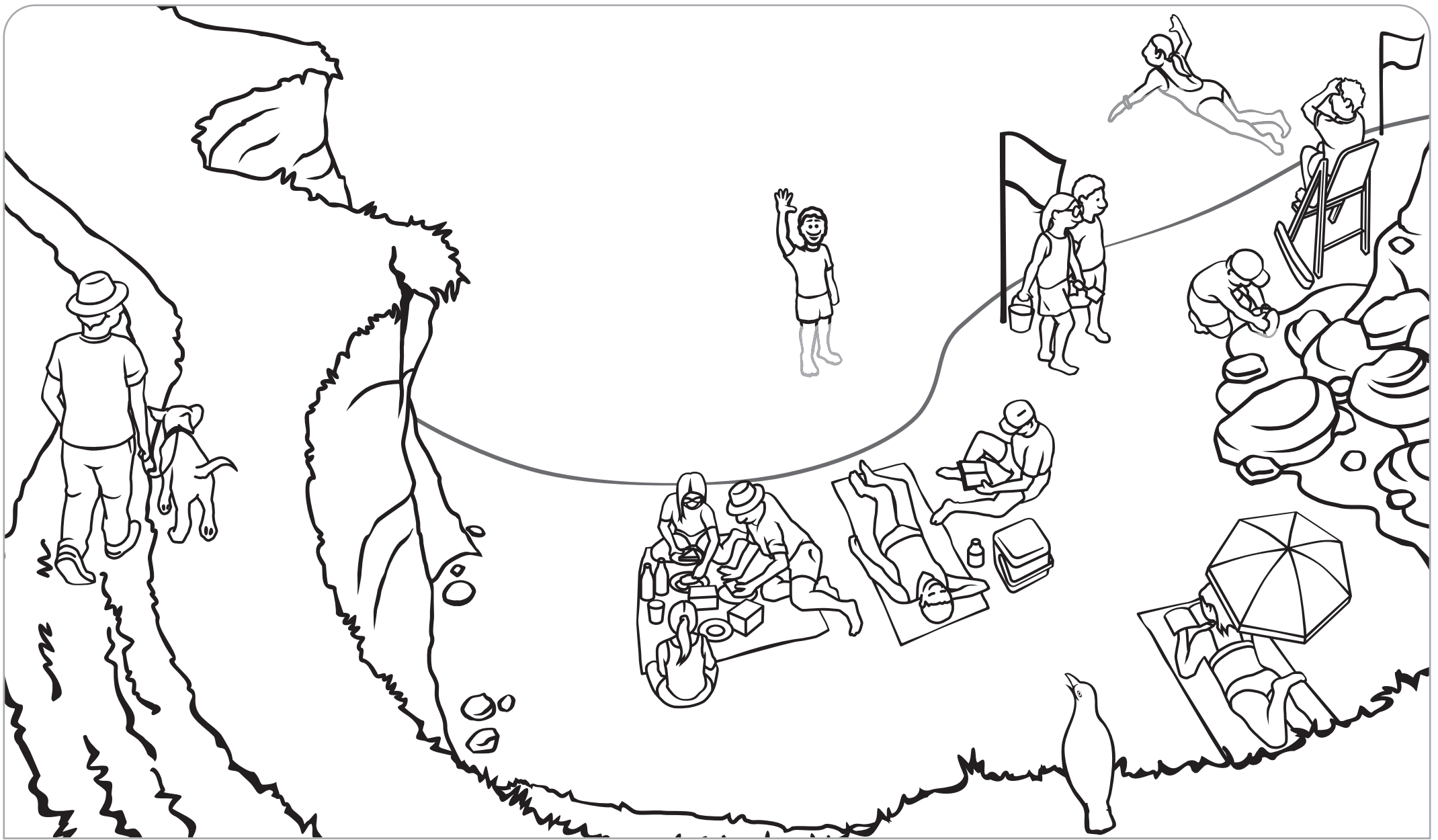
Back ▲





Sometimes the cliff above you might crumble and rocks tumble, so choose a spot away from them to sit or play.





HM Coastguard



You can print out and colour in this picture!

Back to start ▲

